

42/5

LEE'S-CROSSING-PLAT-NO.2-(P.U.D.)

LYING IN THE EAST ONE-HALF OF SECTION 34, TOWNSHIP 44 SOUTH, RANGE 42 EAST,
JANUARY, 1981
PALM BEACH COUNTY, FLORIDA.
SHEET 5 OF 5

1482.03'

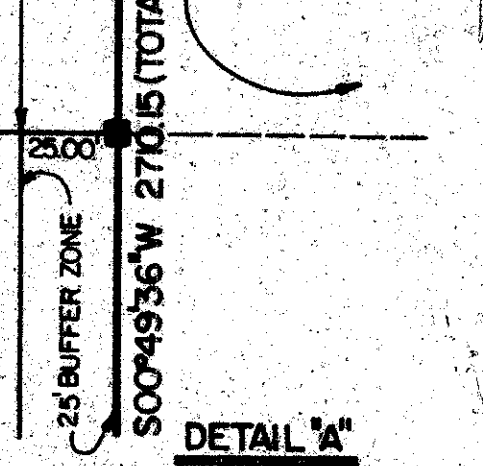
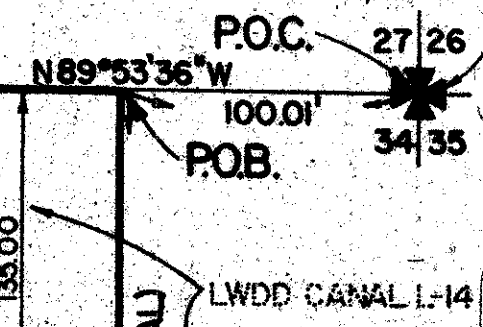
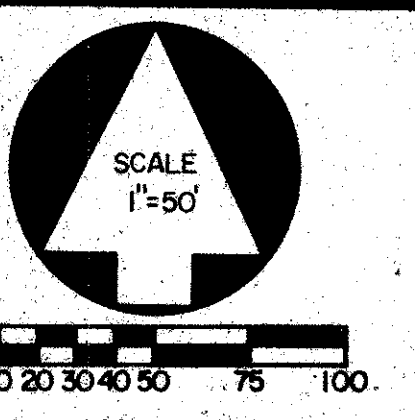
5000'

SEE DETAIL 'A' THIS SHEET

POB

5

STATE OF FLORIDA
COUNTY OF PALM BEACH
THIS PLAT WAS FILED FOR
RECORD AT
THIS DAY OF
AD, 1981 AND DULY RECORDED
IN PLAT BOOK ON PAGES
AND
JOHN B. DUNKLE, CLERK
CIRCUIT COURT
BY: DC.



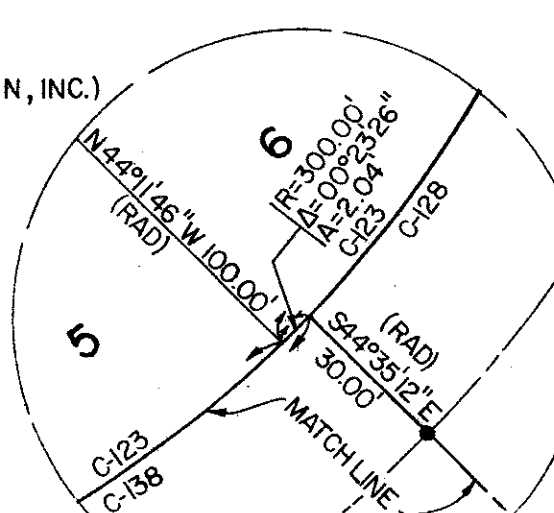
CURVE TABLE

C.M.	RADIUS	DELTA	ARC
C 85	50.00'	44°41'27"	39.00'
C 86	50.00'	42°50'00"	37.38'
C 87	50.00'	87°31'27"	76.38'
C 88	25.00'	42°50'00"	18.69'
C 89	360.00'	11°58'09"	75.21'
C 90	360.00'	11°45'12"	73.85'
C 91	360.00'	11°27'33"	72.00'
C 92	360.00'	01°11'30"	7.49'
C 93	360.00'	36°22'24"	228.55'
C 94	360.00'	02°34'51"	16.22'
C 95	360.00'	11°43'13"	73.64'
C 96	360.00'	11°23'11"	71.54'
C 97	360.00'	37°08'48"	233.40'
C 98	50.00'	45°18'33"	39.54'
C 99	50.00'	265°40'00"	231.84'
C 100	360.00'	10°33'52"	66.38'
C 101	360.00'	10°44'35"	67.50'
C 102	360.00'	10°56'14"	68.72'
C 103	360.00'	04°54'08"	30.80'
C 104	360.00'	37°08'43"	233.40'
C 105	360.00'	04°21'03"	27.34'
C 106	360.00'	11°00'28"	69.16'
C 107	360.00'	10°49'21"	68.00'
C 108	360.00'	10°39'32"	66.97'
C 109	360.00'	36°50'24"	231.47'
C 110	50.00'	44°56'48"	39.22'
C 111	50.00'	45°03'12"	39.22'
C 112	50.00'	265°40'00"	231.84'
C 113	360.00'	10°29'53"	65.96'
C 114	360.00'	10°39'26"	66.96'
C 115	360.00'	05°01'34"	31.58'
C 116	360.00'	36°50'25"	231.47'
C 117	50.00'	45°00'00"	39.27'
C 118	300.00'	17°58'50"	92.40'
C 119	300.00'	01°52'16"	9.80'
C 120	300.00'	90°06'26"	471.80'
C 121	300.00'	03°31'17"	18.44'
C 122	300.00'	19°31'36"	102.24'
C 123	300.00'	17°45'42"	93.00'
C 124	300.00'	14°23'13"	75.33'
C 125	300.00'	90°43'12"	475.00'
C 126	300.00'	09°27'14"	49.50'
C 127	300.00'	08°40'22"	45.48'
C 128	300.00'	89°10'24"	466.91'
C 129	200.00'	17°45'42"	62.00'
C 130	200.00'	9°27'14"	33.00'
C 131	200.00'	89°10'24"	311.27'
C 132	200.00'	14°23'13"	50.22'
C 133	200.00'	85°26'01"	298.22'
C 134	200.00'	1°52'16"	6.53'
C 135	200.00'	17°38'50"	61.69'
C 136	200.00'	90°06'26"	314.53'
C 137	200.00'	08°40'22"	38.27'
C 138	300.00'	44°35'12"	233.46'

BEING REPEATED AS PLAT 5. DO NOT ADDRESS FROM THIS

AREA BELOW RED LINE HAS BEEN RE-PLATTED 8/10/82 PL

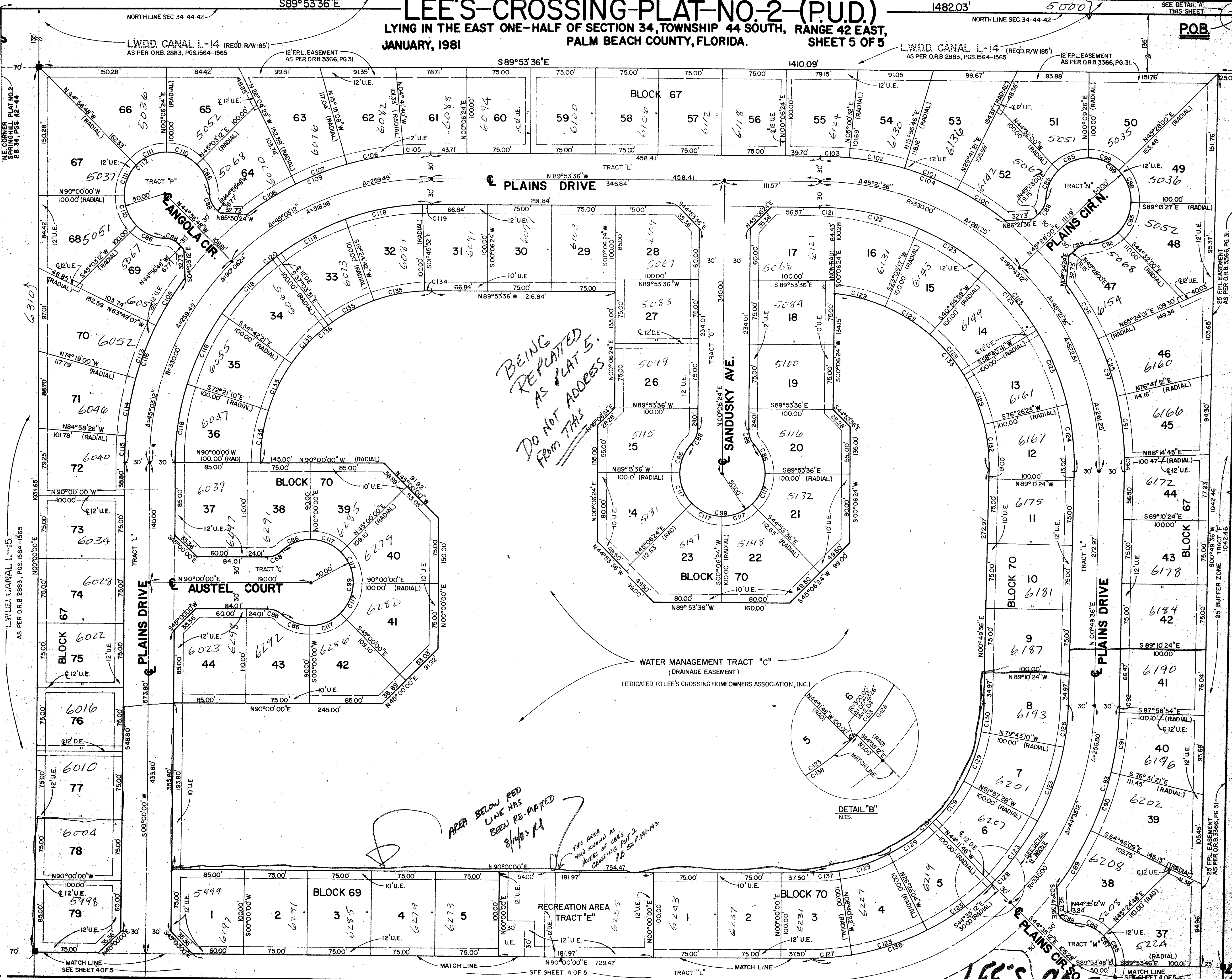
THIS AREA NOW KNOWN AS HOMES OF LEE'S CROSSING PLAT 2, 75-52-P.191-192



WATER MANAGEMENT TRACT "C" (DRAINAGE EASEMENT) (DEDICATED TO LEE'S CROSSING HOMEOWNERS ASSOCIATION, INC.)

100°00'00" E 2709.71' (TOTAL)

SPRINGHILL PLAT NO. 2, PG. 34, P.S. 42-44
L.W.D.D. CANAL L-15 (RECD. R/W 185') AS PER O.R.B. 2883, PGS. 1564-1565



0271-309

LEE'S CROSSING PLAT NO. 2

SEE SHEET 4 OF 5